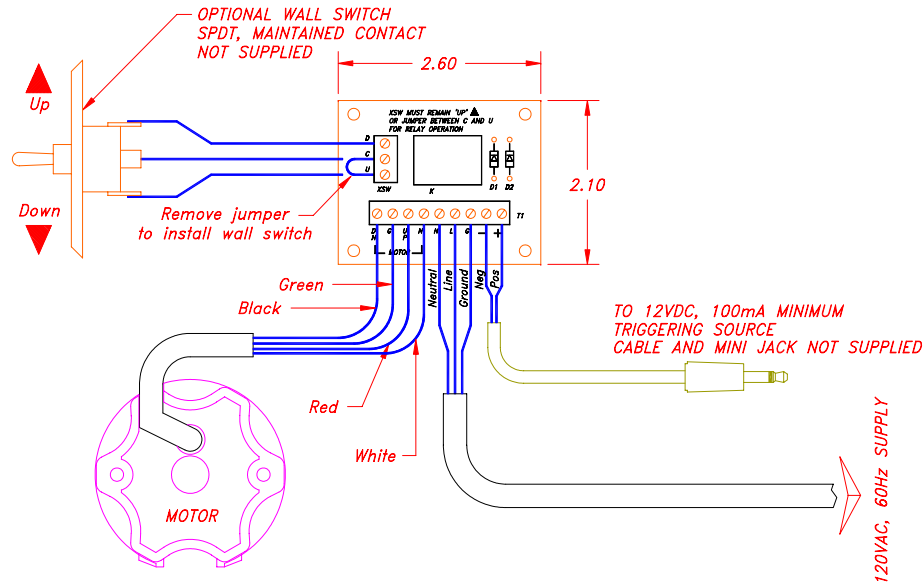


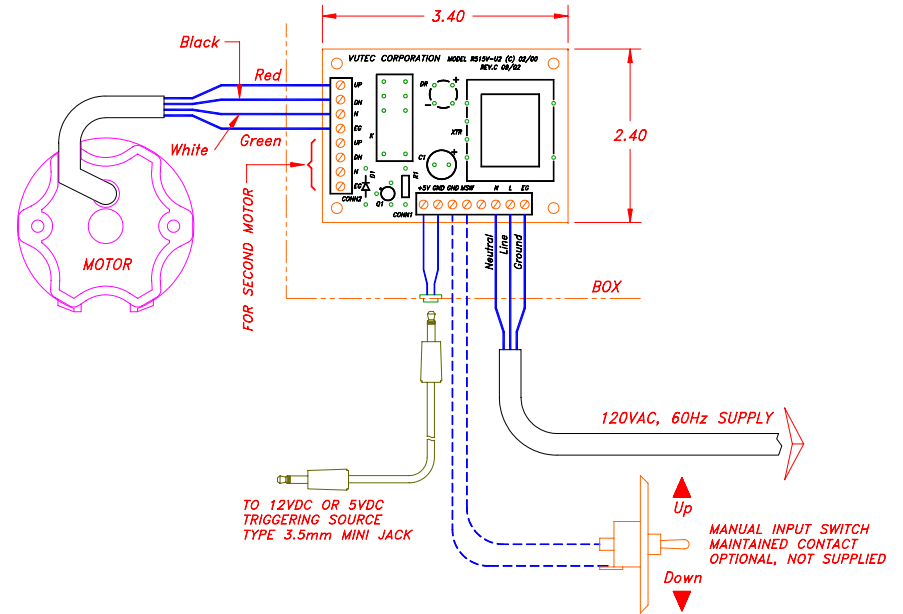
Quote No. \_\_\_\_\_

## TRIGGER CONTROLS

### LECTRIC I, II, III & IV



UNIVERSAL 12VDC TRIGGER  
MODEL R12V-U



LOW LEVEL SIGNAL TRIGGER  
MODEL R515V-U2  
FOR 5 TO 15VDC TRIGGER SOURCE  
OF 25mA OR LESS  
TYPICALLY FROM SONY AND SHARP PROJECTORS

**Notes:**

- 1 - Wirings shown are to be connected by installers.
- 2 - Wirings must conform to local and/or national electrical codes and regulations.
- 3 - Wirings must be of minimum 18 AWG.

CAD drawing – NOT TO SCALE

Optional Control Specified

VUTEC CORPORATION

Project No.

Originator

Date

Customer Signature

Special Notes

Date

