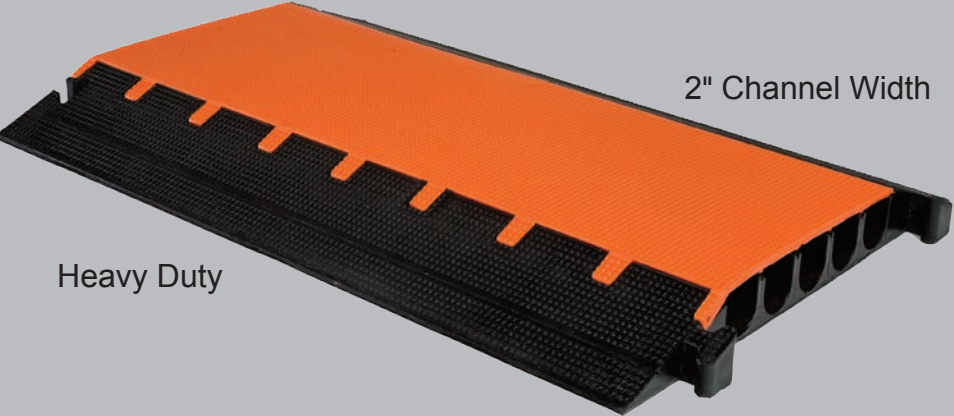


# MG5200



Heavy Duty

2" Channel Width

Five Channel



**MG5200-90L**  
(Pictured without Lid)



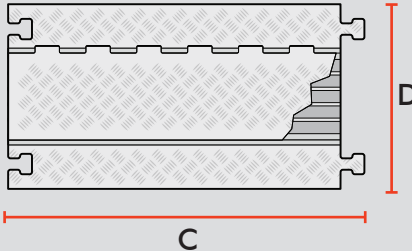
**MG5200-90R**  
(Pictured without Lid)



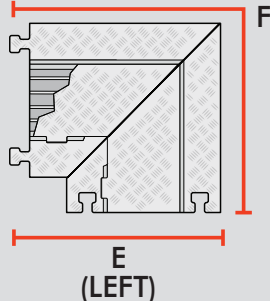
**MG5200-X**



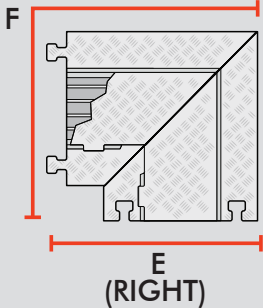
A = 2" PER CHANNEL  
B = 2" IN HEIGHT



C = 36" IN LENGTH  
D = 23.75" IN WIDTH

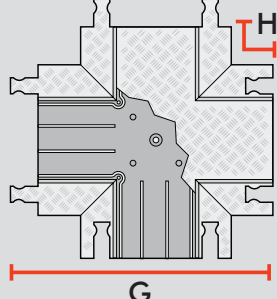


E (LEFT)



E (RIGHT)

E = 27" IN LENGTH  
F = 50" IN WIDTH



G = 36" IN LENGTH  
H = 8.5" IN LENGTH