



Quality Products. Service Excellence.

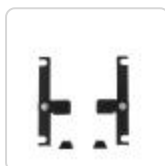
Rack Shelf Slide Block *RSSB Series*

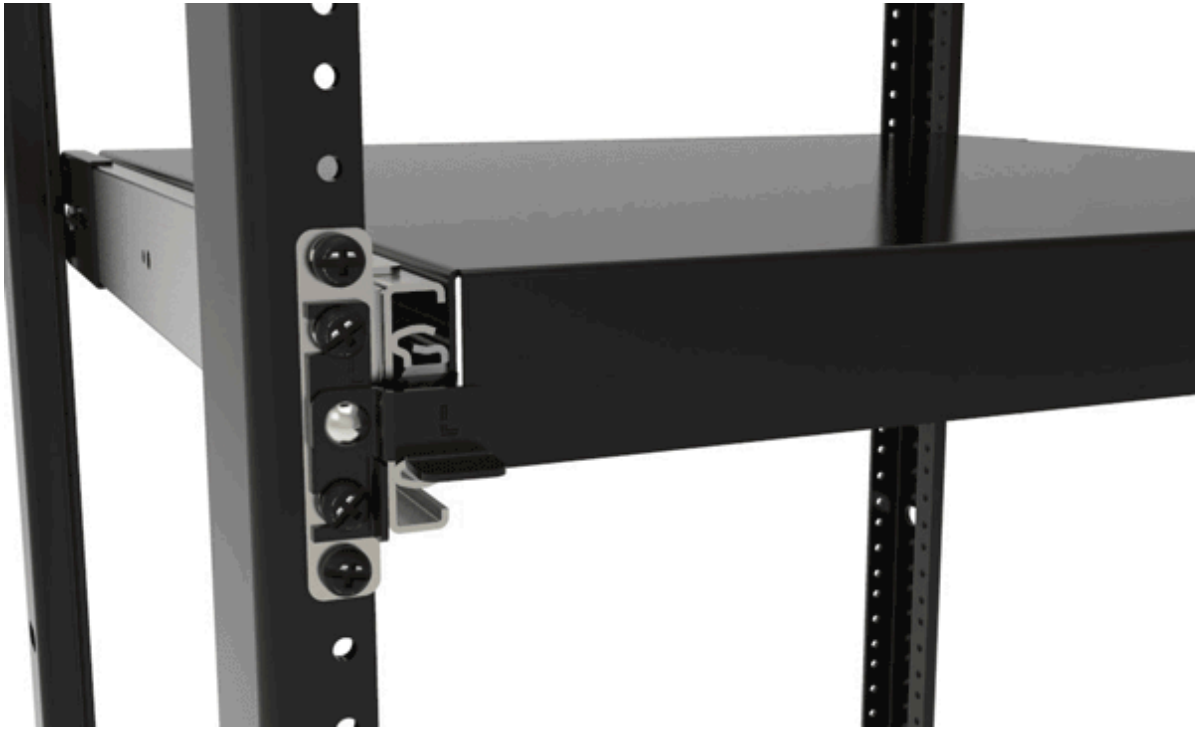
Stop your sliding rack shelves from extending unexpectedly. No more sliding shelves extending out when you don't want them to! The Rack Shelf Slide Block (RSSB) mounts over any existing mounted equipment using an open slot design that conforms to 1U or 2U EIA spacing. This tool will prevent the sliding shelf's unexpected movement when tabs are down. When the tabs are upright, your components can move freely.



Features

- Constructed of 16 gauge steel.
- Open rack mounting slots, fasten over existing equipment in 1U or 2U sizing.
- Includes one pair with a left and right bracket.
- Finished in textured black powder paint.
- TAA-compliant for GSA Schedule purchases.
- RoHS Compliant.
- Manufactured in North America within an ISO 9001:2015 certified facility.
- Patent Pending.





Part No.	Overall Dimensions		Usable Mounting Dimensions	
	Height	Depth	Rack Units	Height
RSSB1UBK	1.72	0.75	1U	1.75
RSSB2UBK	3.00	0.75	2U	3.50

Tags: **Bump Stop**

Data subject to change without notice

© 2026. Hammond Manufacturing Ltd. All rights reserved.