

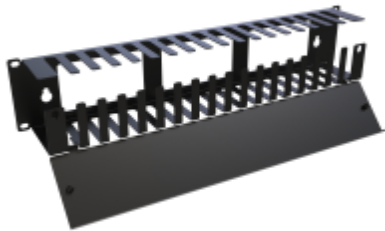


Quality Products. Service Excellence.

Horizontal Cable Manager and Wall Mount Cable Claw *RB-HSF Series*

Dual-purpose cable manager designed for rackmount or wall-mounted cable routing and support.

TOP SELLER



Key Features and Benefits

- 16-gauge steel construction provides durable cable support for rackmount and wall-mounted applications.
- Dual-purpose design supports installation in standard 19-inch racks or as a wall-mounted cable claw.
- Finger-style openings organize and route cables while maintaining accessibility.
- Snap-open, lift-off hinged door allows quick access for cable moves, adds, and changes.
- Rear openings support cable pass-through and flexible routing.
- Available in 1U and 2U sizes to support varying cable density requirements.
- Includes wall mounting points for non-rack applications, enabling use as a cable claw alternative.
- TAA-compliant, manufactured in North America supports government procurement requirements and ensures consistent quality.
- Black powder coat finish (GREENGUARD, TSCA, RoHS compliant) supports indoor air quality and environmental compliance.

The RB-HSF Series cable managers provide a flexible solution for organizing and supporting cables in both rack and wall-mounted installations. Designed to function as a traditional horizontal cable manager or as a cable claw, the series offers versatility that simplifies installation and reduces the need for multiple accessories.

Unlike typical cable claws that are limited to wall-mounted use, the RB-HSF Series can be installed directly in 19-inch racks or mounted to a wall, making it ideal for structured cabling environments where cable routing needs may change over time.

Where the RB-HSF Series Works Best

- Telecom and structured cabling installations.
- Network closets and IT rooms.
- Wall-mounted backboard environments.
- AV and low-voltage installations.
- Installations requiring flexible cable routing solutions.

Best Applications for the RB-HSF Series

- Supporting cable bundles on plywood backboards or walls.
- Organizing horizontal patch cables within racks.
- Replacing traditional cable claws with a dual-purpose solution.
- Routing cables between rack and wall-mounted equipment.
- Providing accessible cable management for frequent changes.

Part of the Rack Basics® line designed for simple, reliable, and affordable installations.

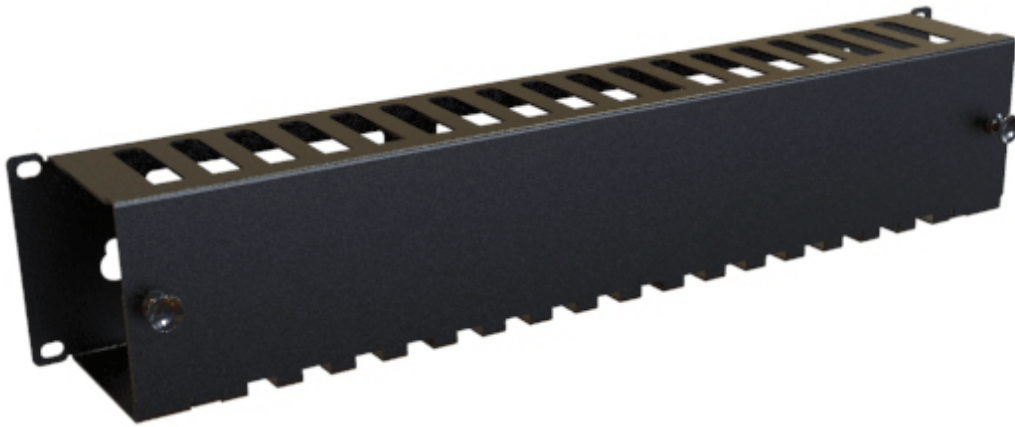
Accessories

- Hardware for Rack Mounting Solutions

RACK BASICS®

A HAMMOND BRAND





| Part No. | Height | Overall Dimensions | | | Rack Units |
|----------|--------|--------------------|-------|--|------------|
| | | Width | Depth | | |
| RB-HSF1 | 1.75 | 19.00 | 3.06 | | 1U |
| RB-HSF2 | 3.50 | 19.00 | 3.06 | | 2U |

Estimated Cable Fill Capacities

| Rack Units | Description | Opening Quantity | Recommended Cable Fill (50% Fill Ratio) | | | Maximum Cable Fill (100% Fill Ratio) | | |
|------------|--------------------|------------------|---|-------|--------|--------------------------------------|-------|--------|
| | | | Cat 5e | Cat 6 | Cat 6a | Cat 5e | Cat 6 | Cat 6a |
| 1U | Channel Opening | 1 | 35 | 22 | 16 | 70 | 45 | 31 |
| | Per Finger Opening | 36 | 16 | 10 | 8 | 32 | 20 | 14 |
| | Rear Pass Through | 3 | 63 | 26 | 18 | 82 | 52 | 54 |
| 2U | Channel Opening | 1 | 76 | 48 | 34 | 151 | 97 | 67 |
| | Per Finger Opening | 36 | 16 | 10 | 8 | 32 | 20 | 14 |
| | Rear Pass Through | 3 | 63 | 26 | 18 | 82 | 52 | 54 |

Tags: **horizontal cable manager, cable claw, wall mount cable manager, rack cable organizer, cable support bracket, cable routing rack, 1U cable manager, 2U cable manager** *Data subject to change without notice*

© 2026. Hammond Manufacturing Ltd. All rights reserved.