



Quality Products. Service Excellence.

Horizontal Hinged Cable Manager with Door *PCMDD Series*

Hinged cable manager with enclosed design for controlled cable routing and protection in 19-inch racks.

Key Features and Benefits



- 16-gauge steel construction supports durable cable management in IT, AV, and network environments.
- Continuous hinged door with magnetic closure provides secure cable retention and easy access for moves, adds, and changes.
- Enclosed design protects cables while maintaining a clean and organized rack appearance.
- Four oblong openings (top and bottom) allow flexible cable routing from above or below the manager.
- Rear openings support cable entry from the back of the rack for improved routing flexibility.
- Available in 1U, 2U, and 3U sizes to support varying cable density requirements.
- Designed for standard 19-inch EIA-compliant rack mounting.
- TAA-compliant, manufactured in North America supports government procurement requirements and ensures consistent quality.
- Black powder coat finish (GREENGUARD, TSCA, RoHS compliant) supports indoor air quality and environmental compliance.



The PCMDD Series horizontal hinged cable managers provide a secure and enclosed solution for organizing cables in 19-inch rack systems. Featuring a continuous hinged door with magnetic closure, they allow easy access while keeping cables contained and protected.

Unlike open or finger-style cable managers, the PCMDD Series offers controlled cable routing through multiple entry points on the top, bottom, and rear of the unit. This makes it ideal for installations where cable protection, organization, and appearance are important.

Where the PCMDD Series Works Best

- Data centers and IT rooms.
- Network and telecom installations.
- AV and broadcast environments.
- Structured cabling deployments.
- Installations requiring enclosed cable management.

Best Applications for the PCMDD Series

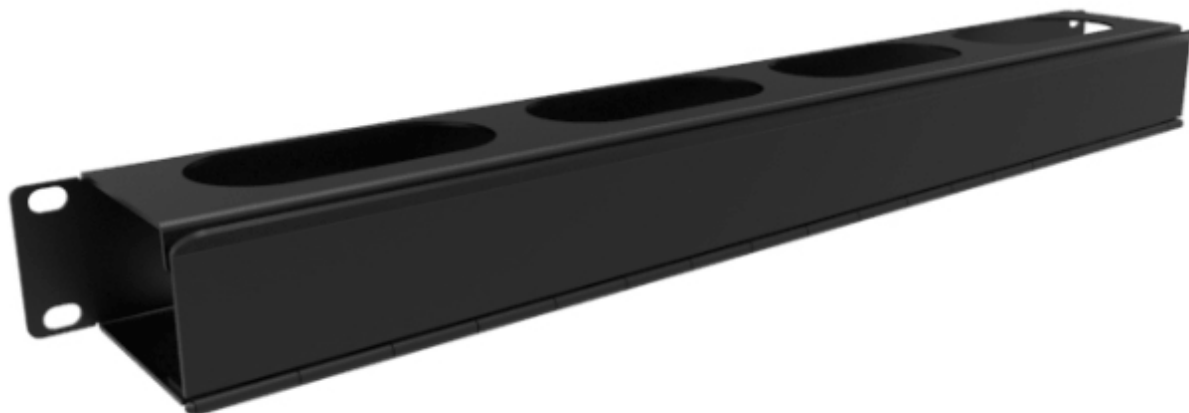
- Organizing patch cables while maintaining a clean rack appearance.
- Protecting cables in environments where retention and containment are required.
- Routing cables from top, bottom, or rear entry points.
- Supporting moderate cable density installations.

Gallery



Accessories

- Hardware for Rack Mounting Solutions



Part No.	Overall Dimensions			Rack Units	Usable Dimensions			Similar Size Part No.
	Height	Width	Depth		Height	Width	Depth	
PCMDD19001BK1	1.72	19.00	2.71	1U	1.25	17.62	2.50	RB-HFMS1
PCMDD19003BK1	3.47	19.00	2.71	2U	3.00	17.62	2.50	RB-HFMS2
PCMDD19005BK1	5.22	19.00	2.71	3U	4.75	17.62	2.50	RB-HFMD3

Estimated Cable Fill Capacities

Rack Units	Description	Opening Quantity	Recommended Cable Fill (40% Fill Ratio)		Maximum Cable Fill (100% Fill Ratio)	
			Cat 6a		Cat 6a	
1U	Channel Opening	1	12		30	
	Top/Bottom Opening	2 x 4 = 8	15		38	
	Rear Pass Through	0	n/a		n/a	
2U	Channel Opening	1	24		61	
	Top/Bottom Opening	2 x 4 = 8	15		38	
	Rear Pass Through	4	11		28	
3U	Channel Opening	1	37		92	
	Top/Bottom Opening	2 x 4 = 8	15		38	
	Rear Pass Through	4	11		28	

Cable fill capacity will vary based on the cable manufacturer.

Tags: **hinged cable manager, horizontal cable manager with door, rack cable manager with cover, enclosed cable manager, rack cable organizer, 1U cable manager, 2U cable manager**

Data subject to change without notice

