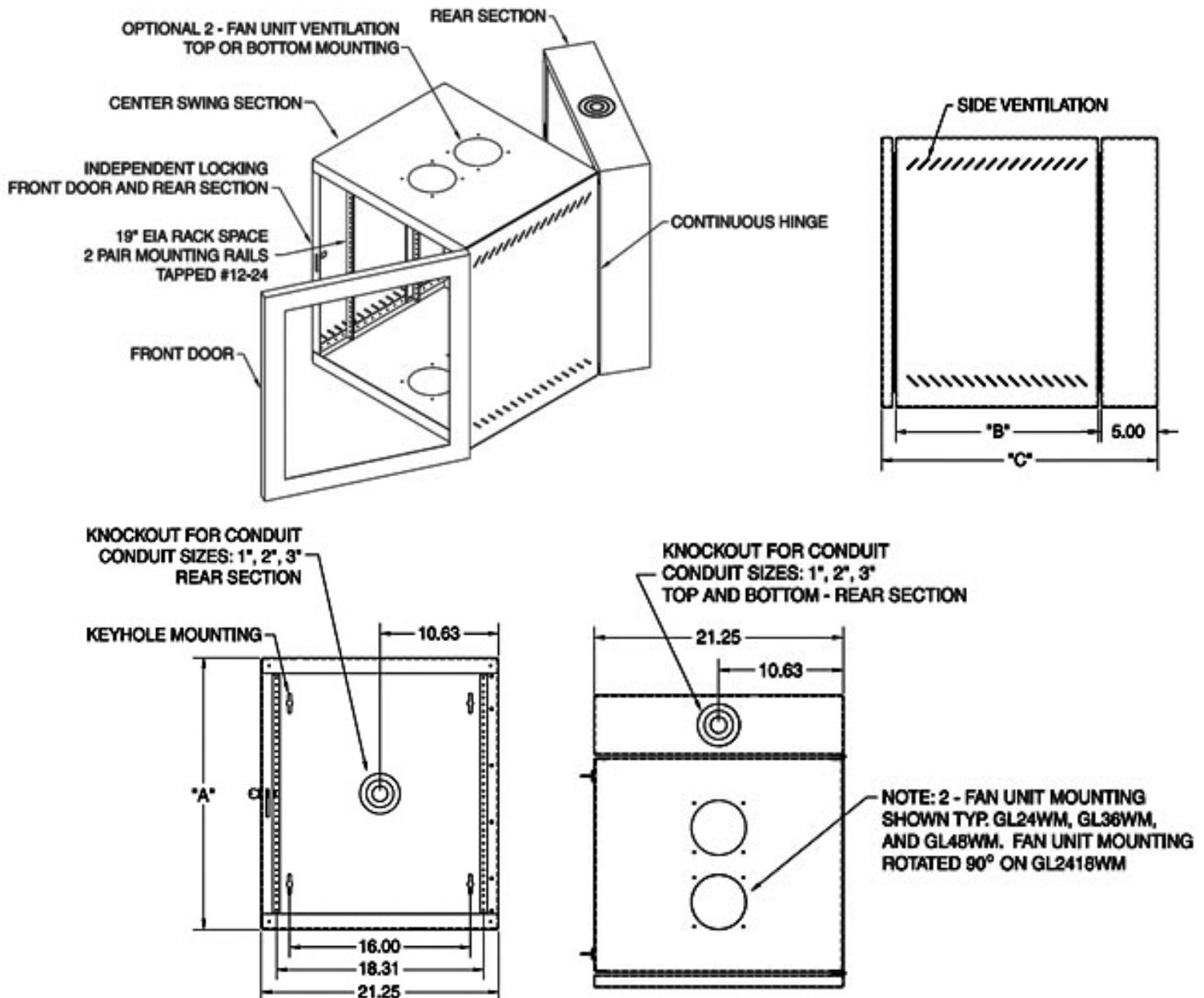


# PRODUCT SPECIFICATION SHEET

## Product Name: Great Lakes Wall Mount Enclosures - WM Series

- The Wall mount enclosure must be UL listed per STD 508, Type 1 and 24, 36, 48" H x 21.25" W x 24.50" D (24" H available in 18" D)
- Unit must be 3 "piece" sectional design using a continuous hinge between. Front and rear sections latch with "push-pull" catch and each section must lock independently. Wall mount to be reversible allowing for right or left hand swing. Top and bottom set up to accept fan assembly. Black powder coat finish on 14-gauge steel.
- Manufacturer must be ISO 9001:2000 registered
- **Mounting** - The base unit must have 2 pair of 19" rack mount rails that are tapped 12-24. Adjustable front to rear.
- **Cable Access** -Rear section to have knockouts in center back and top/bottom for conduit sizes 1, 2 & 3".
- **Doors** -Doors to be plexiglass or solid. Base unit must have gasketing for the doors.
- **Sides** -Sides of center section to have venting slots on top and bottom
- **Cable Management** - all 19" rack mounted cable management to be installed, preferably on the rear rails.
- **Power Strips** - all 19" rack mounted power strips to be installed on the rear rails.
- **Fans** - 2 low profile 75cfm fans to be installed in cabinet (when ordered)



Part #	Overall Height (A)	Rack Depth (B)	Overall Depth (C)
QGL-WM-2418WM	24.0"	11.25"	18.0"
QGL-WM-24WM	24.0"	18.00"	24.5"
QGL-WM-36WM	36.0"	18.00"	24.5"
QGL-WM-48WM	48.0"	18.00"	24.5"

Part #	Overall Dimensions	Rack Space	Weight Capacity	Shipping Weight	Shipping Dimensions (H x W x D)	Color
QGL-WM-2418WM	24"H x 21.25"W x 18 "D	12U	150 lbs *	90 lbs	27" x 24" x 20.5" **	Black
QGL-WM-24WM	24"H x 21.25"W x 24.5"D	12U	150 lbs *	95 lbs	27" x 24" x 26" **	Black
QGL-WM-36WM	36"H x 21.25"W x 24.5"D	19U	250 lbs *	125 lbs	39" x 24" x 26" **	Black
QGL-WM-48WM	48"H x 21.25"W x 24.5"D	25U	300 lbs *	160 lbs	51" x 24" x 26" **	Black

\* Maximum weight capacities at minimal deflection

\*\* Multiple units to same location will get skidded